



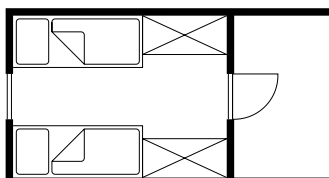
Urlaub & Freizeit  
direkt am See

# Holiday chalets

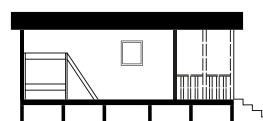
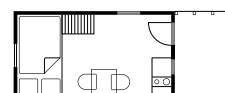
Camping adventure in various wooden houses



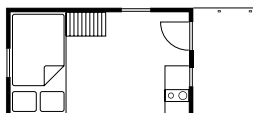
Woody Tramp | 2.70 x 2.50 m + terrace



Stilt House | 4.60 x 2.50 m + terrace



Woody Tour | 3.40 m x 2.50 m + terrace



Our 12 holiday chalets in three different categories are cosy wooden huts which also offer families room for a holiday according to their very individual needs. Whether the **“Woody Tramp”**, **“Woody Tour”** or **“Stilt House”**, all holiday chalets have various sleeping options, built-in cupboards and a fridge. An ideal addition is the covered veranda, on which you can enjoy either breakfast or a fine glass of wine from the region.

If you have any further questions, please don't hesitate to ask.  
[www.campingplatz-gohren.de](http://www.campingplatz-gohren.de)

## Discounts and special offers

Special discounts are available in low season.  
Please observe our information on the back.



Beispielabbildungen



The prices of our holiday chalets apply to three different house types (see table).

**The following are included:**

parking space for one car, electricity consumption, hot water in the shower and wash rooms and refuse disposal fee. Please indicate relevant house type when booking.

**\*Off-Season:**

**20% discount on 2 nights or more!**

07.04. – 08.05.2024

08.09. – 06.10.2024

**Please note:**

From 23.06. to 08.09.2024 rental only possible on a weekly basis, from Saturday to Saturday.

**Prices holiday chalets 2024:**

<b>Woody Tramp (house 1)</b> Sleeps 2 (2 single beds) House: 2.70 x 2.50 m, terrace, 1.50 m	<b>€ 80/night*</b>
<b>Woody Tour (house 2 &amp; 3)</b> Sleeps 2-4 (double bed top and bottom) House: 3.40 x 2.50 m, terrace 1.40 m	<b>€ 90/night*</b>
<b>Stilt house (house 4 – 12)</b> Sleeps 2-4 (double bed top and bottom) House: 4.60 x 2.50 m, terrace 1.80 m	<b>€ 100/night*</b>

**Additional costs:**

Spa tax from 16 years (incl. free use of public transport) (from 01.04 to 31.10.2024, as per by laws of Kressbronn municipality)	<b>€ 3.50/night</b>
Deposit (one-time)	<b>€ 100.00</b>
Final cleaning (one-time)	<b>€ 35.00</b>

**Arrival & departure**

Die Anreise / Check In:	<b>4 p.m. – 6.30 p.m.</b>
Die Abreise / Check Out:	
Ein Abnahmetermin wird Ihnen von 8:00 Uhr bis 10:00 Uhr zugeteilt	

**Equipment**

Depending on the house type, various bed sizes from 0.80 m x 2.00 m to 1.60 m x 2.00 m and various bed types : single beds, double beds, bunk beds, storage space, refrigerator, cooking facilities (electric hotplate), coffee machine (with pads), toaster, kettle, cookware and tableware.

**No running water, sink, shower or toilet. Water can be fetched from the drinking water points with a canister.**

***Bring with you:*** bed cover, bedding (duvet, pillow, sleeping bag), bed sheets, table linen, towels etc.

**Our request to you**

We would like our guests to feel comfortable when glamping.

We therefore ask you not to smoke in your holiday chalet nor to bring dogs with you. Our cleaning service will be grateful for your cooperation. Thank you!

